



# M-series

## MDS1824K05+MD18-ANS

### M-SERIES SHORT EMERGENCY CART with MD18-ANS Anesthesia Package

#### Short Mini Width, Five Drawer Anesthesia Cart w/Key Lock

Designed and built to meet the needs of today's healthcare market. Ergonomic side handles, comfort drawer pulls, expanded lock options and a standard antimicrobial top make things easier for your staff and help support your infection control initiatives. M-Series carts offer you choices.

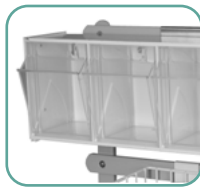
#### MD18-ANS Accessories Include:



3-Tier Back Rail  
(MD30-RBR3)



(3) 12" Side Rails  
(SIDERAIL12)



5-Compartment Tilt Bin  
w/Rail Clips (TILTBIN5RC)



Engineered &  
Manufactured  
in the U.S.

#### Features:

- Sturdy, uni-body steel construction
- Key lock with two keys
- Durable scratch resistant heat sealed powder coat finish
- Full extension drawers slides for easy access
- Body has pre-threaded accessory mounting holes
- Antimicrobial plastic top, removable
- 24" of vertical drawer space
- Cart is delivered assembled
- Industry only fully curved protective bumper
- Fully customizable drawer configurations
- Industry best 5" quiet rolling Tente® casters - 1 steering caster and 2 braking casters

#### Warranty:

- 12-Year Manufacturer's Warranty, 1-Year Limited Warranty on any bought-out parts

Color shown with a Burgundy body and Light Gray drawers. More than 20 additional colors are available.



View similar products online at

<https://www.harloff.com/product-category/anesthesia-carts/>

Toll Free: (800) 433-4064 • Ph: (719) 637-0300  
medicalsales@harloff.com • www.harloff.com

#### Drawer Configuration:

- Three 3" drawers (7.6 cm), one 6" drawer (15.2 cm) and one 9" drawer (22.8 cm)
- 12.5" W x 17" D (31.8 cm W x 43.2 cm D)

#### Assembled Cart Dimensions (without accessories):

- Cart dims: 36.38" H x 23.13" W x 22" D (92.4 cm H x 58.7 cm W x 55.9cm D)
- Cart net weight: 86 lbs (39 kg)
- Approx shipping weight: 120 lbs (54.4 kg)
- Approx shipping dims: 50" H x 24" W x 24" D (127 cm H x 61 cm W x 61 cm D)